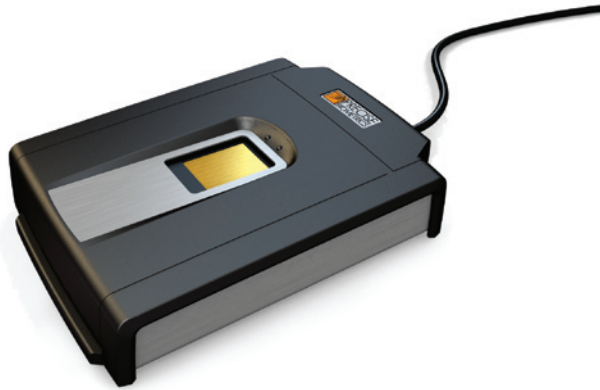


Precise 250 MC



- **Combination fingerprint & smart card reader for two-factor authentication**
- **Design approved by US government specifications for HSPD-12 and PIV***
- **Secure architecture – no sensitive or personal information leaves the device or card**
- **Optimized for Precise Match-on-Card™**

The Precise 250 MC is a secure and robust combined fingerprint and smart card reader, perfectly suited for government users as well as public usage areas. Supporting the ANSI 378 template standard, the Precise 250 MC is designed to fully comply with US governmental requirements for HSPD-12 and PIV.

Combining fingerprint recognition and smart card technologies, you get the best of two authentication methods – Match-on-Card. With the well-proven and widely deployed Precise Match-on-Card™ technology, Precise Biometrics is a recognized world-leader in this field. Precise Match-on-Card™ stores and matches the fingerprint information in the secure environment of the card itself, and thereby eliminates the need for processing sensitive information in PCs and databases, which could be considered weak links in the security chain and may risk user integrity.

The Precise 250 MC used together with Precise Match-on-Card™ technology, Precise Biometrics and partners are able to offer increased security and preserved user privacy in any authentication solution.

With a robust and user-friendly design, the Precise 250 MC is durable and ideal for high transaction volume and public usage areas.

* For more information on HSPD-12 and PIV – visit <http://csrc.nist.gov/piv-program/>.



Microsoft, Windows, and the Windows logo are trademarks, or registered trademarks of Microsoft Corporation in the United States and/or other countries.



Precise 250 MC

PRODUCT FEATURES

- Uses the strengths of the fingerprint matching technology Precise BioMatch™
- Interoperability through supporting ANSI 378 template standard
- Optimized for Precise Match-on-Card™
- Two-factor authentication, combining smart cards and fingerprints
- User-friendly and durable design for high-transaction volume
- Firmware upgradeable for future smart card types and capability enhancements
- High-speed smart card operation

SPECIFICATIONS

General

- Power consumption: Standby: 0,5 mA
- Normal: 50 mA
- Max: 220 mA
- Operating temperature range: 0-50° C / +32-120° F
- USB 1.1/2.0 (full-speed) compliant
- FCC (Part 15 Class B) and CE certified
- Microsoft WHQL approved
- UL 1950 certified
- ISO 9000/1 and ISO 14001 production certified
- RoHS/WEEE compliant
- USB Chip/Smart Card Interface Devices (USB CCID) compliant
- Drivers for: Windows 2000, Windows XP and Windows Vista

Biometric Reader

- Complies with HSPD-12 and PIV specifications (Single Fingerprint Capture Devices)
- Image processing is performed within the device or smart card
- Large area (12.8 x 18.0 mm / approx. ½ x ¾ in) silicon sensor for maximum ease of use
- 500 dpi sensor resolution - UPEK TCS1

Smart Card Reader

- Smart card reader
- ISO/IEC 7816 T=0 and T=1, 3V and 5V cards supported
- Support for up to 8 MHz smart cards
- Up to 250 kbit/s communication speed

Windows is a registered trademark of Microsoft Corporation in the United States and other countries

All specifications can be subjected to change without notice

